



# Historical Perspectives

PORT WASHINGTON HISTORICAL SOCIETY

Volume 20, Issue 4

Winter 2010

## Board of Directors

Geri Zehren, President  
Jackie Oleson, Vice-President  
Linda Nenn, Treasurer  
Kathie Gordon, Secretary  
Sue Bruner  
Angie Cope  
Grace Eernisse  
Michele Weiland  
Mike Keller

## Light Station Museum

Rick Smith, Co-Director  
Linda Nenn, Co-Director  
262-284-7240

## Newsletter

Angie Cope

## Quarterly Programs

Mary Flierl

## Contact information

portwashhistsoc@att.net  
262-268-9150

P. O. Box 491

429 West Grand Avenue  
Port Washington, WI 53074

## Website

portwashingtonhistoricalsociety.org

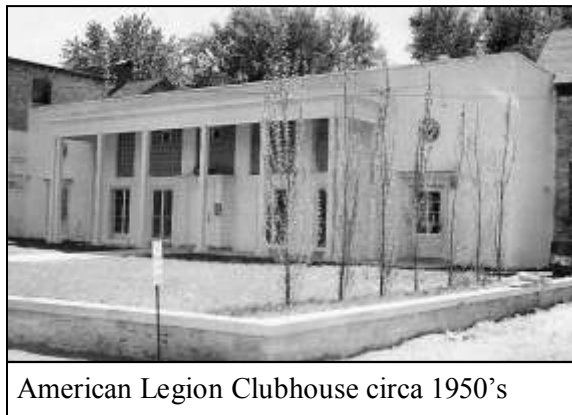
*Historical Perspectives* is published four times a year by the Port Washington Historical Society.

## Membership

\$20 Individual  
\$30 Family  
\$10 Student  
\$150 Business  
\$150 Lifetime

## Back by Popular Demand! Taverns, Saloons, Sample Rooms, and Pubs

The topic for the October Quarterly Meeting proved to be so interesting that requests were overwhelming to do a sequel which would allow time for stories of the past about the taverns



American Legion Clubhouse circa 1950's

in Port.

Back by popular demand, at the January 20<sup>th</sup> Quarterly Meeting there will be a panel of local **'experts' who will share their memories** and also draw on the memories of those in the audience about **Port's taverns, saloons, sample rooms and pubs.**

The meeting will be held at the American Legion Clubhouse, 435 Lake Street in Port Washington, at 7:00pm. Come early to enjoy samples of refreshments

**served in the past at Port's finest taverns.** Join in the recollections, a raffle, and prizes.

Quarterly Meeting  
January 20, 2010  
7:00 pm  
American Legion  
Clubhouse  
435 Lake Street in Port  
Washington

## Inside this issue:

<i>President's Message</i>	2
<i>Business Sponsor</i>	2
<i>Community Quarterback Award</i>	3
<i>Christmas Parade</i>	3
<i>Toni Smith</i>	4
<i>Century and Sesquicentennial Farms</i>	4
<i>Down at the Resource Center</i>	5
<i>150th Anniversary of the 1860 Port Washington Light Station</i>	6-7
<i>Volunteer of the Quarter</i>	8
<i>Board of Directors Nominations</i>	8
<i>In Memoriam and Donations</i>	9
<i>Membership Renewal</i>	10-11
<i>Calendar of Events</i>	12

## President's Message

Happy New Year to all! The year 2010 is upon us — the end of the first decade of the century. Another ten years of history recorded by your Society. Another decade ahead to record and to help shape the history to be recorded. I offer this quote, source unknown, "Once it is ruined it is ruined, but once it is saved it is there for the next generation." That is part of our mission to collect the past and to preserve the present for the future.

**Our Society began in 1991 with that determination: "to preserve."** At the time it was the Light House, excess property of the Coast Guard, left to whatever end fate might have for it. Who could possibly have envisioned what was in store for that building? What a great mission that preservation became as we now see it as one of the outstanding buildings of Port Washington. Our 1860 Light House is celebrating its 150<sup>th</sup> anniversary in 2010. Happy Anniversary, Light House! Thank you to all who participated in its restoration and thank you to all who continue to serve as keepers of the light.

Next year the Society will be celebrating its 20<sup>th</sup> anniversary. Look back to what has been accomplished and feel very proud of what you have done as members of the PW Historical Society. **Let's keep the momentum going forward as the light in the lantern tower continues to burn and guide the way.**

*Geri Zehren,  
President*

*Our 1860 Light House is celebrating its 150<sup>th</sup> anniversary in 2010. Happy Anniversary, Light House!*



*Please patronize our  
Business Sponsor*

## **TELLO'S** Grille & Café

*Thank you Tello's for sponsoring the Winter issue  
of Historical Perspectives, the quarterly newsletter of the Port Washington  
Historical Society*

*Tello's is located in Port Washington's historic Hoffman House  
200 W. Grand Avenue*

## Green Bay Packer Community Quarterback

Congratulations to Rick Smith for being recognized by the Green Bay Packers for his many contributions as a volunteer. Rick is a recipient of the *Green Bay Packers Community Quarterback Award*. The award is designed to honor volunteers who exemplify leadership, dedication, creativity, and a commitment to improving the communities in which they live through volunteerism.

Rick was selected as one of twenty to be recognized. In January he will be honored at a dinner at the Legends Club at



Lambeau Field. Rick will be recognized for the work he has done in the past and continues to do, both with the Light Station and also the Historical Society. The Port Washington Historical Society will receive a grant in the amount of \$1000.

Rick was the inspiration and driving force behind the heritage part of the Maritime Heritage Festival with the museum and displays in downtown windows. This is an award that is richly deserved.

*See your name in print!*

*Do you have a good story to tell about the history of Port Washington? Write it up, jot it down or tell it to Angie and we may print it in Historical Perspectives. portwashhistsoc@att.net*

## Christmas Parade 2009

As a reflection of past years, the Port Washington Historical Society was able to **participate once again in this year's annual** Port Washington Christmas Parade on Dec. 5<sup>th</sup>.

Thanks to the Fellenz family for the use of their sleighs and trailer.



In years past, Rick Smith and daughters would walk in the parade. This year, Rick and daughter Sarah, along with light house dog Chrissy, rode in a decorated sleigh.

The hope is that the Society will be represented in future parades as well.

### Port Washington State Bank Calendars

The Port Washington State Bank has calendars with historic photos, a number of which were acquired from our Historical Society. The calendars are available for a suggested donation of \$1 and proceeds benefit the historical society in the community of that Bank Branch.

## Antonia “Toni” Smith

by Sue Bruner

Antonia “Toni” Smith died on August 15, 2009, at 86 of acute myeloid leukemia. She and her husband Lloyd joined the Historical Society as Charter members, and have been active members and among the major contributors ever since.

Toni, born and raised in Calumet County, graduated from UW Whitewater and earned a Master’s Degree in Business Administration at UW Madison. She initially taught school at Random Lake before moving to Port Washington in 1952 to become the business education teacher at Port Washington High School.

Toni and Lloyd were married in 1958 and



maintained active memberships in many community organizations. During the years that Lloyd was president of Port Washington Fish Day, Toni served as secretary. Toni organized and served as president of the Port Washington Business and Professional Women’s Club, was a member of the Port Washington Junior Women’s Club, and later the Port Washington Women’s Club. She co-authored a book with Martha Wedemeyer about the history of the Women’s Club. Toni and her husband owned and operated the Harborside Motor Inn in Port Washington until they both retired. She is survived by her husband Lloyd, a daughter, Margaret Ann, and son David, two grandsons, and other relative and friends.

## Century and Sesquicentennial Farm and Home Award

Officials of the Wisconsin State Fair, presented by U.S. Cellular, are pleased to announce that applications are now available for the 2010 Century and Sesquicentennial Farm and Home Award. To qualify for the award, families are required to provide proof of continuous family ownership of a property in the state of Wisconsin for either the last 100 or 150 years.

All property owners will be honored at a program held in conjunction with the 2010 Wisconsin State Fair. Honorees will receive complimentary Fair admission tickets, invitation to the awards breakfast sponsored by Hillshire Farm, a commemorative photo, certificate and outdoor display sign provided by Hillshire Farm, a long-time program sponsor.

The Century Farm and Home Program began in 1948 in conjunction with the State of Wisconsin’s Centennial Celebration. There are currently over 8,325 Century Farms and Homes

nestled throughout the Badger State. The Sesquicentennial Program originated in 1998 as part of the State’s Sesquicentennial Celebration. Since that time, over 550 families have been honored. In 2009, 145 Century properties and 34 Sesquicentennial properties were honored for carrying on Wisconsin’s rich family farming tradition.

To request a copy of either application, write to Century or Sesquicentennial Farm & Home Program, 640 South 84th Street, West Allis, WI 53214, call Jill Albanese, Program Coordinator, at 414-777-0580, or call the Wisconsin Department of Agriculture, Trade & Consumer Protection’s, Bureau of Farm Services at 1-800-942-2474.

The deadline for applications is March 1, 2010, and only one certificate is issued per property.

# Down at the Resource Center

by Jackie Oleson

It is always interesting to see who comes through the door at the Office/Resource Center on Grand Ave. Recently we had numerous donations ranging from old newspapers, books, letters, photos, and old records and family photo albums. Even a business stamp appeared on our doorstep. Some of our visitors come in looking for information and others come in to offer us clues to the past.

Former resident Bill Turner was in to talk about Turner Manufacturing. Turner Manufacturing produced Turner Simplicity **Engines and Tractors**. **Bill's family sold the business** in 1922 to William Niederkorn, an employee who had a vision for a new product line, for the grand sum of \$11,000. Niederkorn went on to develop the manufacturing business in its new location in Port Washington and eventually sell it to Allis Chalmers in 1965 for more than \$18 million. Bill was flabbergasted, to say the least, at the difference in amounts.

Another recent visitor was Roger Boerner and his wife, and relative Helen Bachman, an energetic 90-year-old. Going through a donation of photos from the Boerner family gave us not only an insight as to who is in the photos but also the wonderful stories that make up family histories. The Boerners not only were proprietors of general stores on Franklin Street and on the west side of the city on Grand Avenue, but they also went on to be the namesake of the Botanical Gardens in Milwaukee. Recently a decedent of the Gilsons was in to share photos with us.

The visits, emails and the phone calls that come in help to affirm what the Historical Society is about.

This fall we had several inquiries about ghosts in several of the buildings around town. Anyone have any stories about ghosts that could be shared?

Consider being a part of the Resource Center on Grand Ave. We are open Monday and Thursday afternoons. We are in need of volunteers to file, to work with *Pastperfect*, and to help with the storage and organization of do-



Boerner Bros. Co on Franklin Street.

nated items. Training is offered, hours are flexible, and your participation is much appreciated. We are in particular need of help on Thursday afternoons.

Contact Jackie at portwashhist-soc@att.net or 262-268-9150.

## Show you care with "WE CARE"

The Port Washington Historical Society is a participant in the Pick 'N Save "We Care" Community Dollar Program. Our Organization will benefit when our members list the number 620430 of the Historical Society on their Advantage Plus Savers Club

**PWHS  
"We Care"  
Number  
620430**

Card application or a change form are available at the service counter of any Pick 'N Save store. A percent of all purchase dollars will be donated to the Historical Society.

Thank you to those who have already signed up.



# 150th Anniversary of the 1860 Port Washington Light Station



The Light Station as it appeared in in the late 19th Century

Port Washington's first lighthouse was built on purchased land, in 1849. The lighthouse rose 36-38 feet from the ground to the lantern. Lighthouse and keeper's dwelling were constructed of cream city brick and were some distance from the lighthouse, probably right where the current light station is situated.

By 1859 the lighthouse had to be replaced, possibly due to poor mortar or substandard bricks. This was the case at many sites around Lake Michigan, although a definite citation regarding the reason for demolishing the 1849 lighthouse is not known. The 1860 Light Station with living quarters was considered a rebuilding by the Coast Guard. Brick was salvaged and reused in the new construction .



Light Station as it appeared in 1908— The Light Station beacon was discontinued October 31, 1903 and the last light keeper was replaced in 1924 when the pier head light was automated.



The structure as it appeared in 2001

The restoration project, as approved by the National Park Service and the Wisconsin State Historical Society, encompassed cleaning and repairing the exterior masonry and rebuilding the infrastructure, walls, roof, tower and lantern room. The exterior bears the scars of a 1934 renovation, but the dwelling once again stands as a complete Light Station.

The first floor was completely gutted and rebuilt to the original specifications. The second floor rental unit was completely remodeled. A new access ladder for the tower and lamphouse, as well as a restored landing for the stairway from the first floor was added in anticipation of visitors and tours.



The beautifully renovated Light Station as it appears today

To read more about the history of Light Houses in Port Washington and the restoration of the 1860 lighthouse, please visit the web site: <http://www.portlightstation.org/>

Lighthouse Linda is compiling a list of personnel that manned the Port Washington Lights and a few more that just hung their hats at the site after the Station closed. Her list can be found at our website here:

<http://www.portwashingtonhistoricalsociety.org/lspersonnel.htm> If you have any information to add, please contact Lighthouse Linda! She'd love to hear from you.



Photo from 2002

# Volunteer of the Quarter

Angie Cope is our Volunteer of the Quarter. Angie has been on the Board since 2008, **and she edits and produces the Society's newsletter and the website.** She edits and writes articles having written on the Court House, County Fair, Victory Gardens and Port Washington area 4-H Clubs.

Last fall the Board decided to print the newsletter in the office, and Angie took on this added responsibility. She was also successful in finding a business sponsor for the newsletter to cover the cost of printing.

**Angie's day job is** working as a map librarian for the American Geographical Society Library at UWM. She has lived in the Ozaukee County for over 16 years and in Port for the past eleven years with her



husband, three children, and two dogs. She enjoys scrap booking, genealogy, loves history and brings her knowledge of computers to facilitate the work of PWHS. Angie brings enthusiasm and new ideas to the Board, often with a fresh perspective.

Angie works to provide a balance between her career, her family, and the Historical Society. Like many of us, Angie has a vision for the PWHS. She would like to see the Society acquire a permanent facility for the resource center and a museum with display space.

**Angie's work for the** PWHS and the community is applauded. Thanks Angie for all your time and effort. You have enriched what we do.

## Nominations Sought for Board of Directors

The Port Washington Historical Society has been most fortunate to have good leaders on the Board of Directors. Their time and energy is most appreciated. Each April we have elections for those whose terms have expired and for the vacancies that need to be filled for those who can no longer volunteer their time on the Board.

Our present Board and their terms of office are as follows: Geri Zehren, Kathie Gordon, Mike Keller 2010; Linda Nenn, Suzanne Bruner, Angie Cope 2011; Jackie Oleson, Grace Eernisse and Michele Weiland 2012. Under the leadership of Geri Zehren, our President, and Jackie Oleson, our Vice-president, the Board has become more involved in community events and historic preservation.

Kathie Gordon and Mike Keller are seeking a second term. Because Geri Zehren has fulfilled two consecutive three year terms, and according to our bylaws, needs to step down for at least a year before considering serving in that capacity again, there is one vacancy that needs to be filled this year.

It is the hope of the Nominating Committee that individuals who have an interest in preserving the history and heritage of the Port Washington area would step forth and become candidates for the Board of Directors election in April 2010. The Board meets on the third Wednesday of the month at 7:00pm. Meetings are held at the Grand Avenue Resource Center. An Application for the Board is available on the website: [www.portwashingtonhistoricalsociety.org/BoardApp.pdf](http://www.portwashingtonhistoricalsociety.org/BoardApp.pdf)

or are available at the Resource Center. Please consider sharing your time and talents with the Port Washington Historical Society.

If you have further questions you may phone Mary Flierl at 262-339-7028.





# In Memoriam and Donations



## IN MEMORIAM

Forrest Pesch  
Bernice Beer  
Jane Schaefer  
Grace Pretty  
Mary Beth Bostwick Paape  
Eugene Paulson

## MEMORIAM DONATIONS

Mary E. Flierl and Doug and Ardy Ahsmann in honor of Toni Smith  
Earl and Martha Buehler and Mary E. Flierl in honor of Judge Charles Larson  
Joyce Trepel in honor of Danis Caglar (Father-in-law of Lynn Trepel)

## ANNUAL FUND DRIVE

Lloyd Smith  
Walter and Judy Dauska  
James and Jeannine Hortstman  
Ronald and Bette Schowalter Fund: Greater Milwaukee Foundation

## LIGHT STATION AND RESTORATION DONATIONS MEMORIALS

Karen Morris, in honor of Lois Rosewitz

## LIGHT STATION—INSCRIBED BRICKS

Donald and Carol Schaefer: MARVIN CORNELL  
Jacquelyn Oleson: WALLACE OLESON, HENRIETTA LEASON, RYAN POPP  
Harley Owners Group Sheboygan: SHEBOYGAN HARLEY OWNERS GROUP

## RESTORATION DONATIONS

Lloyd Smith  
James Fowler  
Carole Bahr  
Grace and Marc Eernisse  
Linda Nenn: antique USLHS Bouy Light  
Richard Smith  
Gerry Smith: original nautical drawings for resale

## NEW OFFICE COMPUTERS AND SUPPLIES

Geri Zehren  
Jacquelyn Oleson  
Linda Nenn

*Any omissions are unintentional. Please contact Linda Nenn regarding corrections or additions.*

## Thank you

Thank you to Ray Wagner who continues to offer his invaluable time and knowledge to assist us with our computers. He generously installed the new computer at the office, did all of the necessary connections while sharing his big smile the whole time. What a guy. Many, many thanks to Ray.

Volunteer of the summer quarter Marlene Richart has continued to show us what dedication is all about. Marlene has been working endlessly at the task to take all of our past agendas, minutes, and committee reports and put them to files in an orderly fashion. This was 20 years of records coming together, it was an enormous task. Thanks to her we can now track our history.

## Wish List

Thanks to Kathie and Todd Gordon, we now have a step ladder, so that is off the wishlist. We still need a good vacuum cleaner, and now we need a portable sound system—as was demonstrated by our Christmas float.

## Storage Space

We are still in need of some off-site **storage of materials we don't need** immediate access to. If you have, or know someone who has, about 50 square feet of dry, safe storage to keep some collections, please contact the Office at 262-268-9150.

# Thank you for supporting the 2010 Membership Renewal Drive

## BUY ONE, GET ONE FREE

A membership renewal form was sent out last month and we appreciate the renewal response for 2010. We look forward to receiving renewals from those who may have overlooked returning their forms.

All members, including Charter and Lifetime, may give a free gift membership to an individual—a friend, relative, teacher, neighbor, anyone who you think would enjoy membership in our Historical Society.

Please use this form to renew your own membership, give an additional donation to the Society or to give a gift membership.

Thanks for your generous support.

## NEW MEMBERS

Annual	Lifetime
Mike & Alison Didier	Carol Heinen
Kathleen Bink	Margaret Smith Lamude
Phil R. Uttech	David H. Smith
Sarah Smith	James Fowler
Lawrence Strauss	
Mary Kay Schuknecht	Gift Member Promotion
Gailya Geib	Paul Hansen
Ellen Rooney	Paul & Sally Ehrlich
Norma Bishop	Margaret Lampert
Kathy O'Connor	Gordon & Ingrid Williams
Richard & Jane Fellenz	Nancy Klever
	Sandra Glau
	Judy Jones
	Jay Blumenberg

Considering a charitable gift to a non-profit in your estate plan?

**Don't forget the Port Washington Historical Society!** Such gifts help groups like ours expand programs, enhance collections, and maintain historic properties like the Light House. For more information, please contact 268-9150.

## Port Washington Historical Society 2010 MEMBERSHIP FORM

**Members receive:**

- Subscription to *Historical Perspectives*, the quarterly newsletter
- Occasional announcements via mail and email
- Admission to the 1860 Light Station Museum atop St. Mary's Hill
- Admission and access to our Resource Center and archives
- Admission to the Research Center and Archives at the Luxembourg American Cultural Society (LACS) in Belgium, Wisconsin
- 10% discount on gifts at the Historical Society Office and the Light Station (publications excluded)

**MEMBERSHIP DUES:**

- |  |      |   |       |
|--|------|---|-------|
| <input type="checkbox"/> Annual Individual | \$20 | <input type="checkbox"/> Individual Lifetime      | \$150 |
| <input type="checkbox"/> Annual Family     | \$30 | <input type="checkbox"/> Business                 | \$150 |
| <input type="checkbox"/> Annual Student    | \$10 | Membership year runs from January 1 - December 31 |       |

**ADDITIONAL CONTRIBUTION:**

Also enclosed is a tax deductible contribution of \$ \_\_\_\_\_ to benefit the Society.

Name(s) (Please print) \_\_\_\_\_

Address \_\_\_\_\_

City \_\_\_\_\_ State \_\_\_\_\_ Zip \_\_\_\_\_

Email \_\_\_\_\_ Phone \_\_\_\_\_

\_\_\_\_\_ Please contact me! I'd like to volunteer for a project or committee.

**ENCLOSED IS MY CHECK IN THE AMOUNT OF :** \$ \_\_\_\_\_

*Please make checks payable to the Port Washington Historical Society*

*Send your renewal and/or memberships to:*

*Port Washington Historical Society  
P.O. Box 491  
Port Washington, WI 53074-0491*



### PWHS memberships make a terrific gift!

In addition to the Buy One, Get One Free promotion going on now, memberships make great gifts that give all year long. Photocopy the above form or just include an additional sheet of paper.

It's never too late to send in a gift along with your membership renewal. Your gift is tax-deductible as allowed by law, and will help support the Society's programs and facilities.



PORT WASHINGTON HISTORICAL SOCIETY

P. O. Box 491  
Port Washington, WI 53074-0491  
[www.portwashingtonhistoricalsociety.org](http://www.portwashingtonhistoricalsociety.org)

## Society Calendar

QUARTERLY MEETING  
Wednesday, January 20, 2010 at 7:00 p.m.  
American Legion Clubhouse  
435 Lake Street in Port Washington

*Public and guests welcome!*

Wednesday, January 20, 2010  
Quarterly meeting & program 7 pm

Wednesday, April 21, 2010  
Quarterly meeting & program 7 pm

Forever Gold Rush  
at Sharbuno Jewelers

Fall Gala, Cornucopia of History  
Saturday, November 6th, 2010